

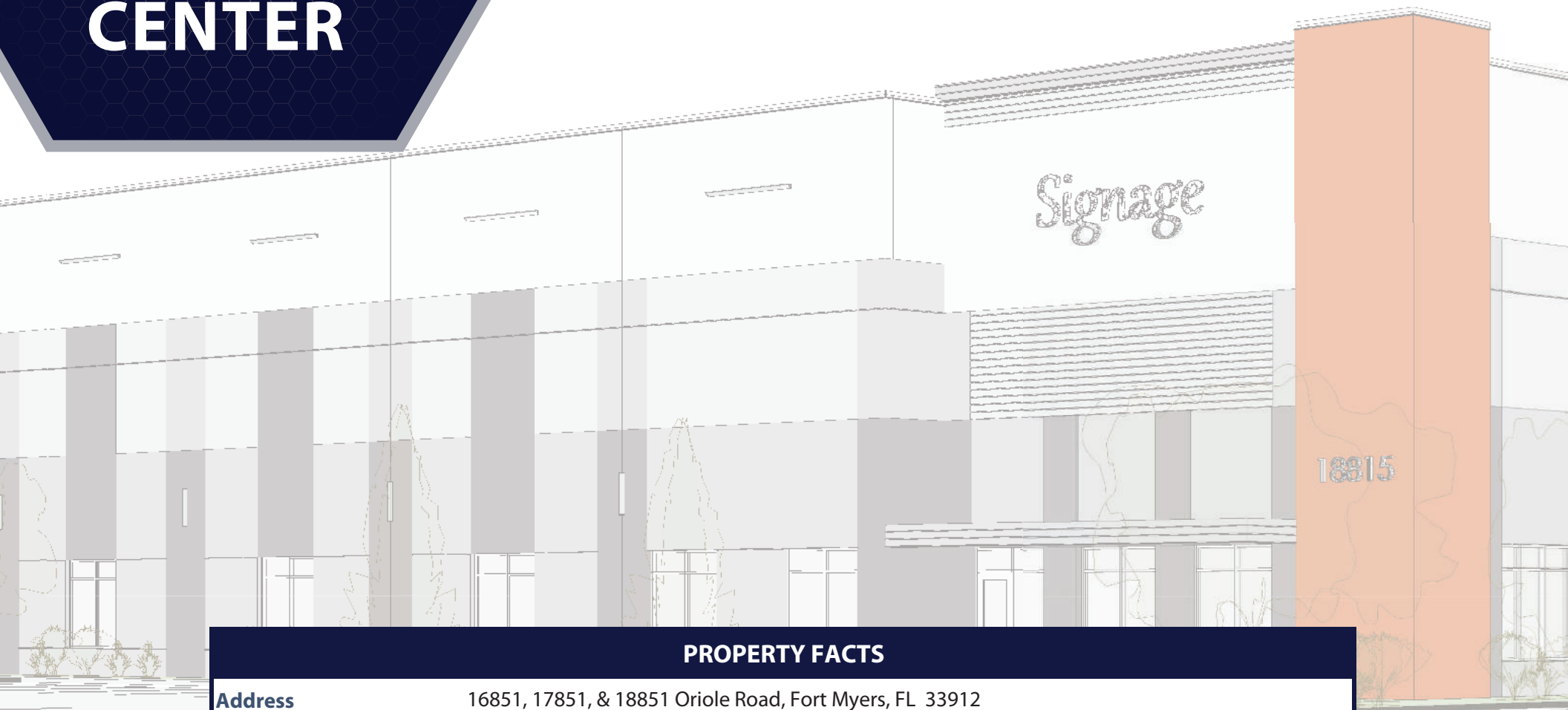
# ORIOLE LOGISTICS CENTER

16815 , 17815, & 18815 ORIOLE ROAD  
FORT MYERS, FLORIDA 33912

**WINTER  
2025  
DELIVERY!**



# ORIOLE LOGISTICS CENTER



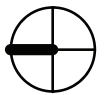
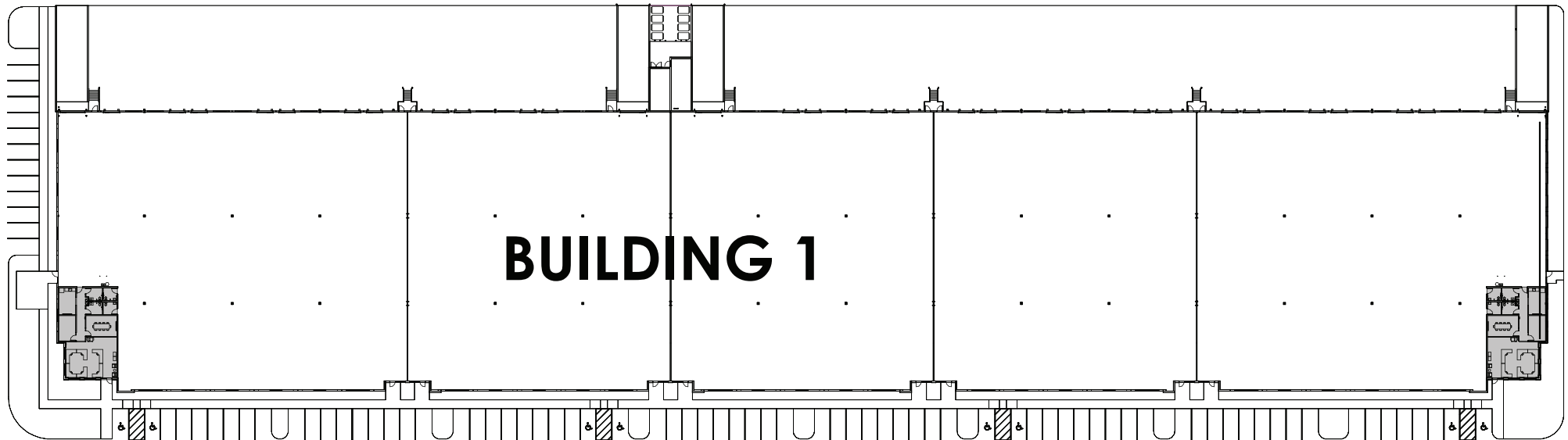
## PROPERTY FACTS

<b>Address</b>	16851, 17851, & 18851 Oriole Road, Fort Myers, FL 33912		
<b>Lease Rate</b>	Negotiable	<b>Column Spacing</b>	50' x 60'
<b>Number of Buildings</b>	Three (3)	<b>Building Depth</b>	180'
<b>Remaining Space</b>	153,000 SF	<b>Minimum Size</b>	24,000 SF
<b>Year Built</b>	2025	<b>Sprinkler</b>	ESFR
<b>Clear Height</b>	32'	<b>Zoning</b>	MPD ( <i>Mixed-Use Planned Development</i> )

# OVERALL SITE PLAN



Floor Plan  
**BUILDING 1**  
16815 Oriole Road



## BUILDING 1 SPECIFICATIONS

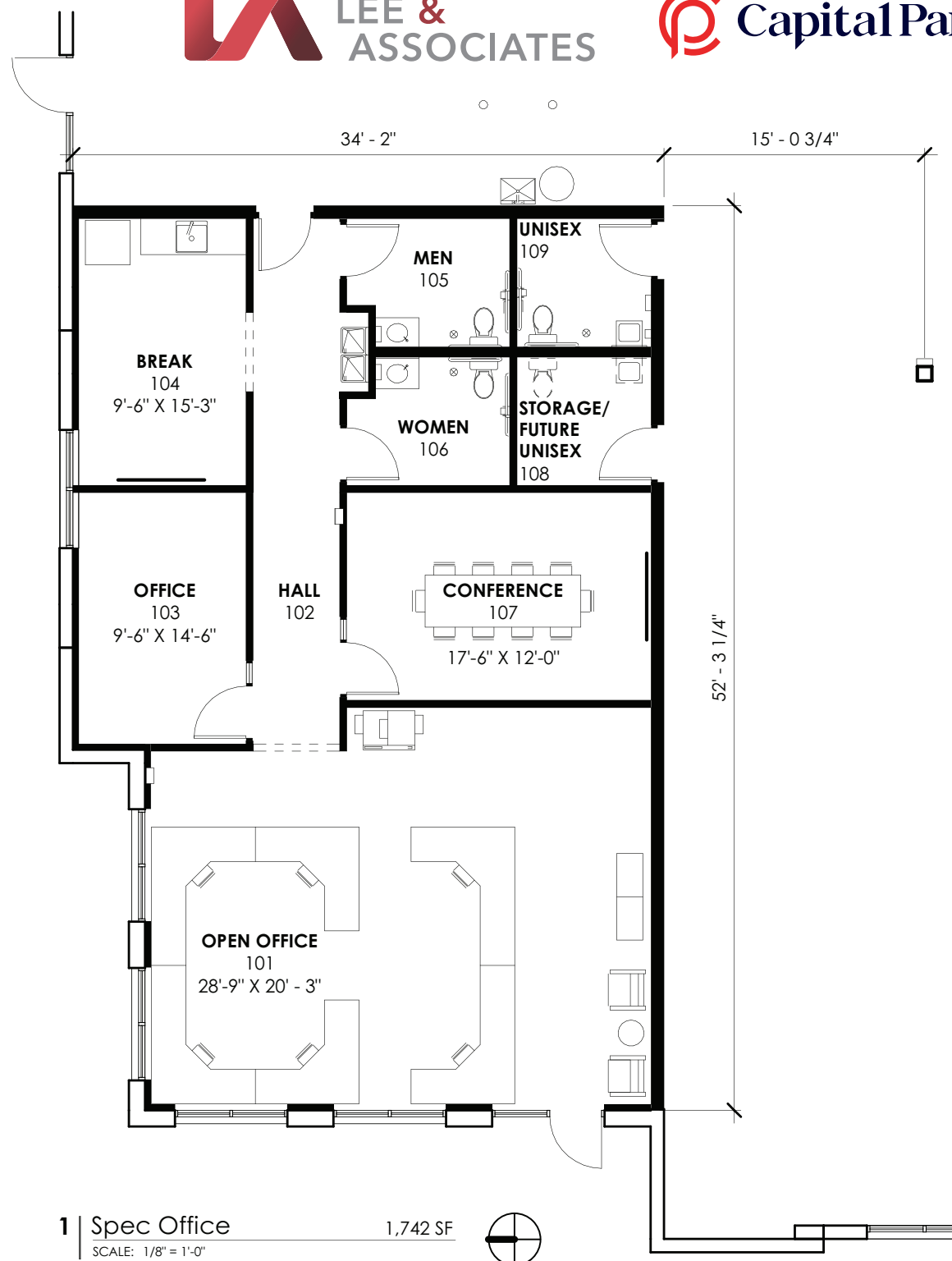
136,000 SF Total  
Twenty-Eight (28) Dock Doors  
Four (4) Drive-In Doors Via Ramps  
160' x 850'  
176 Parking Spaces

Office Plan  
**BUILDING 1**  
16851 Oriole Road

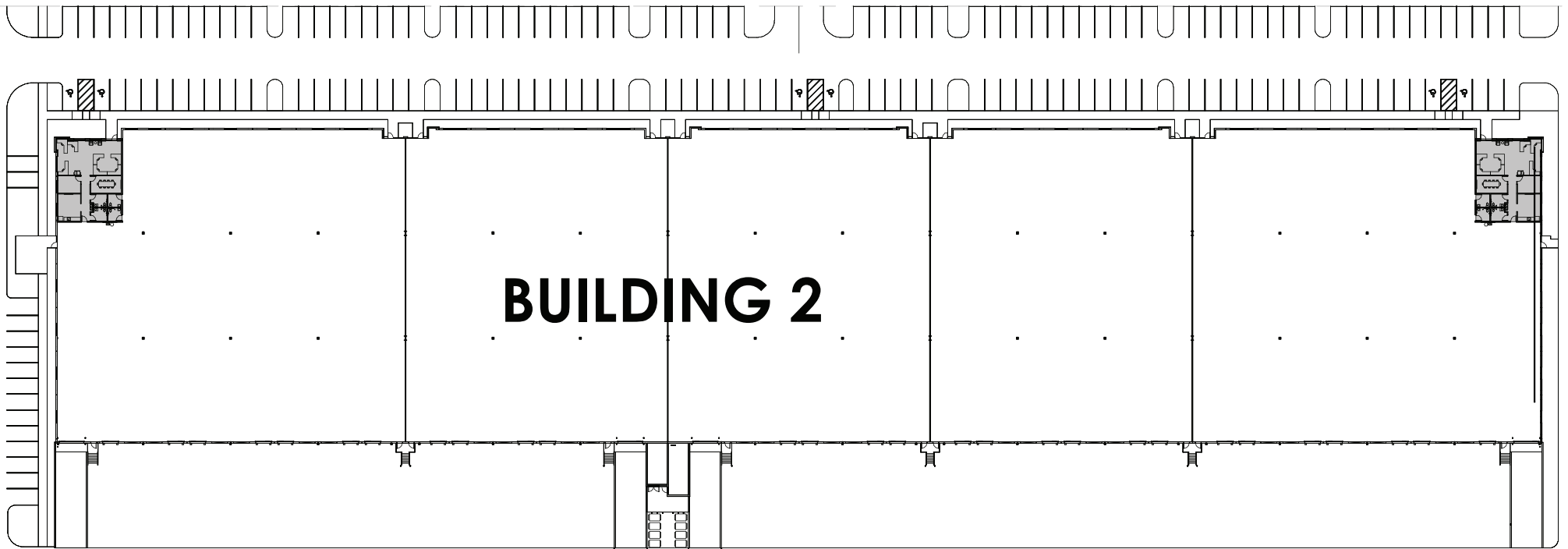


**BUILDING 1**

Office Detail  
1,742 SF



Floor Plan  
**BUILDING 2**  
17815 Oriole Road



## BUILDING 2 SPECIFICATIONS

153,000 SF Total  
Twenty-Eight (28) Dock Doors  
Four (4) Drive-In Doors Via Ramps  
180' x 850'  
202 Parking Spaces



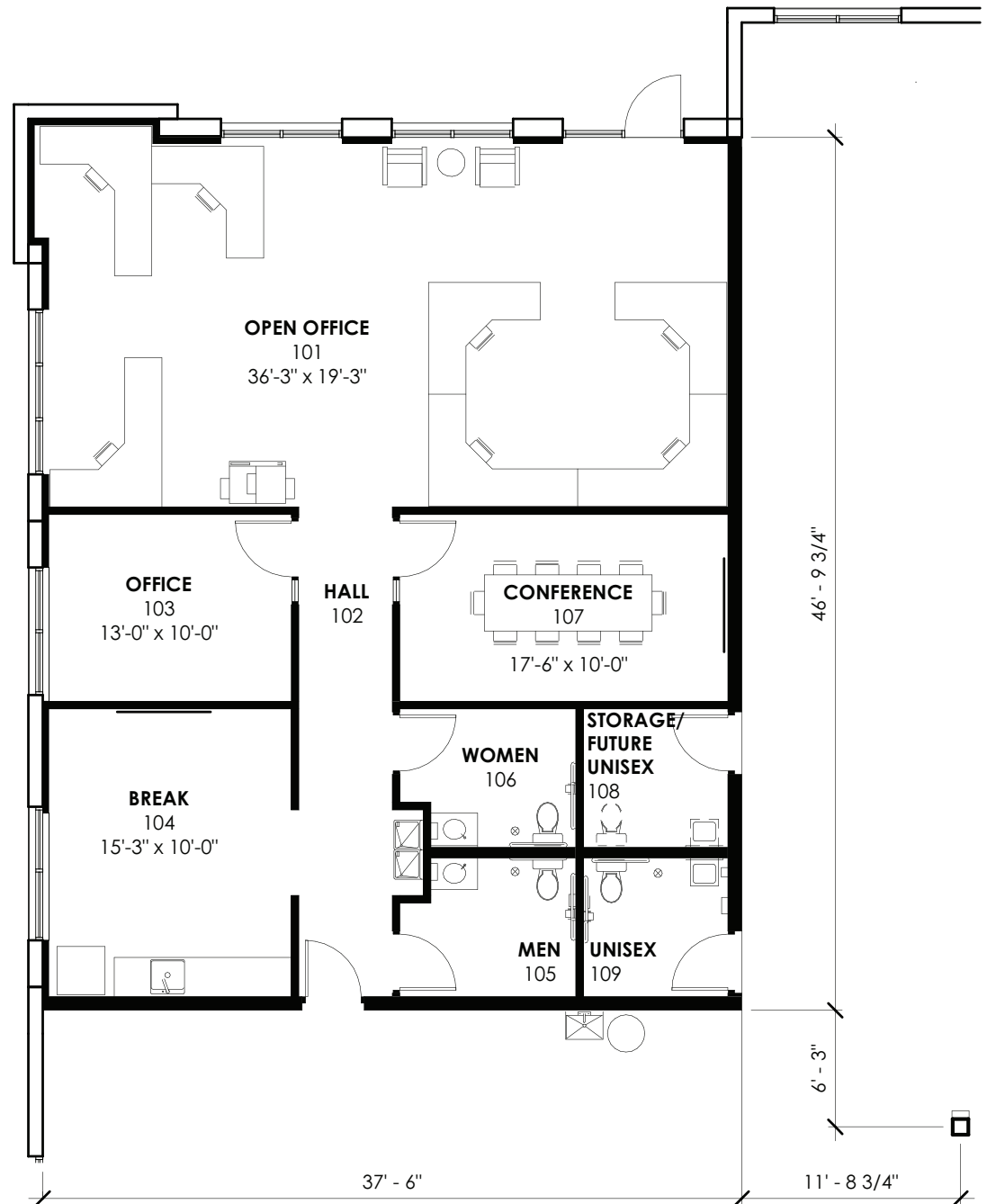


Office Plan  
**BUILDING 2**  
17815 Oriole Road

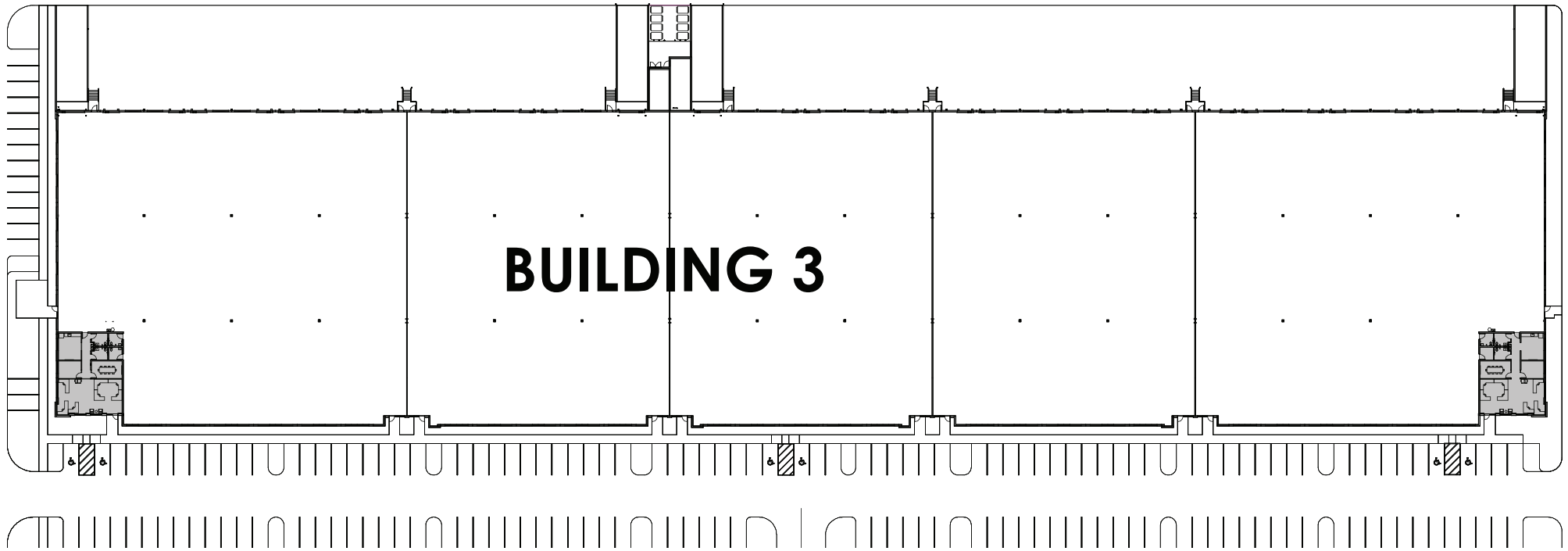


**BUILDING 2**

Office Detail  
1,810 SF



Floor Plan  
**BUILDING 3**  
18815 Oriole Road



## BUILDING 3 SPECIFICATIONS

153,000 SF Total  
Twenty-Eight (28) Dock Doors  
Four (4) Drive-In Doors Via Ramps  
180' x 850'  
202 Parking Spaces

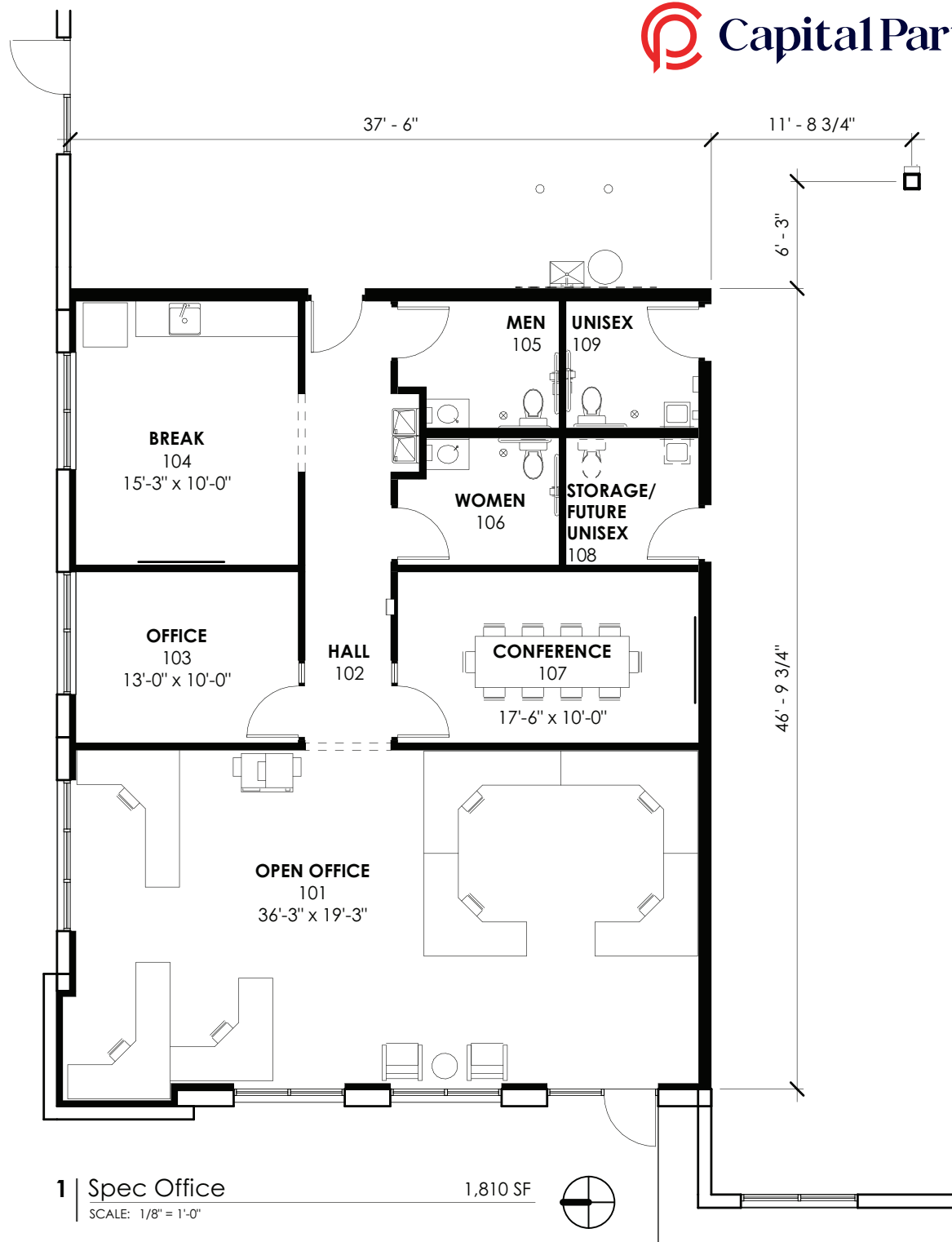


Office Plan  
**BUILDING 3**  
18815 Oriole Road



**BUILDING 3**

Office Detail  
1,810 SF



# LOCATION AERIAL



Future Three Oaks Pkwy Extension

Terminal Access Rd

Treeline Ave

Alico Rd

75

128

Three Oaks Pkwy

Oriole Rd

Lee Rd

Domestic Ave



## PRESENTED BY



**BOB JOHNSTON, SIOR**  
PRINCIPAL  
(239) 210-7601  
BJOHNSTON@LEE-ASSOCIATES.COM



**JERRY MESSONNIER, SIOR**  
PRINCIPAL  
(239) 210-7610  
JMESSONNIER@LEE-ASSOCIATES.COM



**ADAM BORNHORST**  
SENIOR VICE PRESIDENT  
(239) 210-7616  
ABORNHORST@LEE-ASSOCIATES.COM



COMMERCIAL REAL ESTATE SERVICES



*Capital Partners is an industry-leading, Minneapolis-based, commercial real estate developer, investor, and operator. For nearly three decades, Capital Partners has acquired, developed, and managed more than \$1.5 billion of institutional quality industrial property totaling more than 14 million square feet. Capital Partners' investment platform includes ownership of industrial assets, development, asset management, property management services, and full in-house accounting services.*

### LEE & ASSOCIATES | NAPLES - FT. MYERS

LEE-FL.COM

11215 METRO PARKWAY, BUILDING 1, SUITE 1  
FORT MYERS, FL 33966



The information and details contained herein have been obtained from third-party sources believed to be reliable, however, Lee & Associates has not independently verified its accuracy. Lee & Associates makes no representations, guarantees, or express or implied warranties of any kind regarding the accuracy or completeness of the information and details provided herein, including but not limited to, the implied warranty of suitability and fitness for a particular purpose. Interested parties should perform their own due diligence regarding the accuracy of the information. The information provided herein, including any sale or lease terms, is being provided subject to errors, omissions, changes of price or conditions, prior sale or lease, and withdrawal without notice. Third-party data sources: CoStar Group, Inc. and Lee Proprietary Data. © Copyright 2019 Lee & Associates all rights reserved.