

**FOR
LEASE**



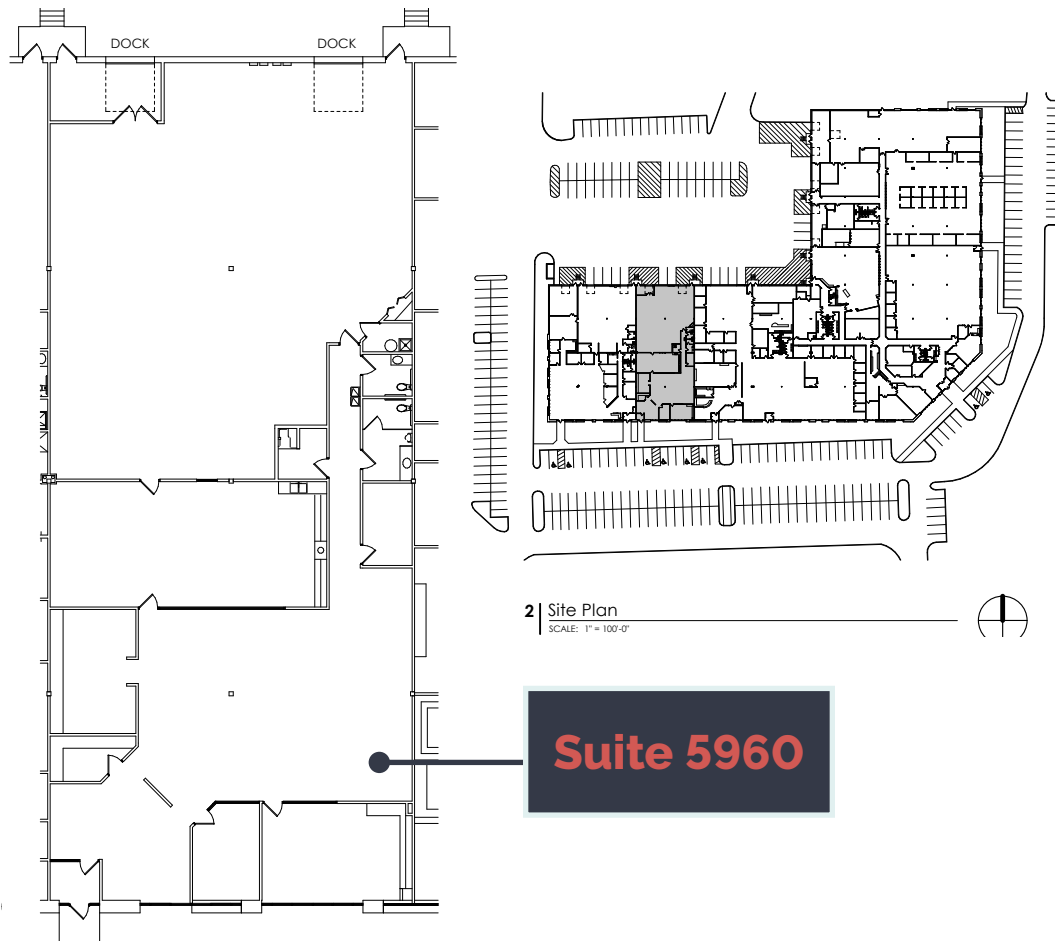
**GOLDEN HILLS
BUSINESS PARK I**

**5900 GOLDEN HILLS DRIVE,
GOLDEN VALLEY MN**



CBRE

PROPERTY DETAILS



TOTAL BUILDING SF

92,379 SF

AVAILABLE SF

8,480 SF

4,280 OFFICE SF

4,200 WAREHOUSE SF

CLEAR HEIGHT

17'

YEAR BUILT

1996

PARKING

3.89/1,000

ELECTRICAL

400A

480V

3PH

LEASE RATES

Negotiable

RE TAXES & CAM

\$9.42

RE TAXES: \$5.61

CAM: \$3.81

LOADING

**Two 8'x10'
dock-high
doors**

ACCESS

**EASY ACCESS TO
INTERSTATE 394 AND
MN HWY 100 VIA XENIA
AVENUE S. 5 MILES TO
MINNEAPOLIS CBD**

LOCATION MAP



GOLDEN HILLS BUSINESS PARK I

Brian Wasserman

Senior Vice President
+1 952 924 4681
brian.wasserman@cbre.com

Matt Oelschlager

Executive Vice President
+1 952 924 4600
matt.oelschlager@cbre.com

Mike Bowen

Senior Vice President
+1 952 924 4885
mike.bowen@cbre.com

©2023 CBRE, Inc. All rights reserved. This information has been obtained from sources believed reliable, but has not been verified for accuracy or completeness. You should conduct a careful, independent investigation of the property and verify all information. Any reliance on this information is solely at your own risk. CBRE and the CBRE logo are service marks of CBRE, Inc. All other marks displayed on this document are the property of their respective owners, and the use of such logos does not imply any affiliation with or endorsement of CBRE. Photos herein are the property of their respective owners. Use of these images without the express written consent of the owner is prohibited.