

**FOR  
LEASE**



**GOLDEN HILLS  
BUSINESS PARK I**

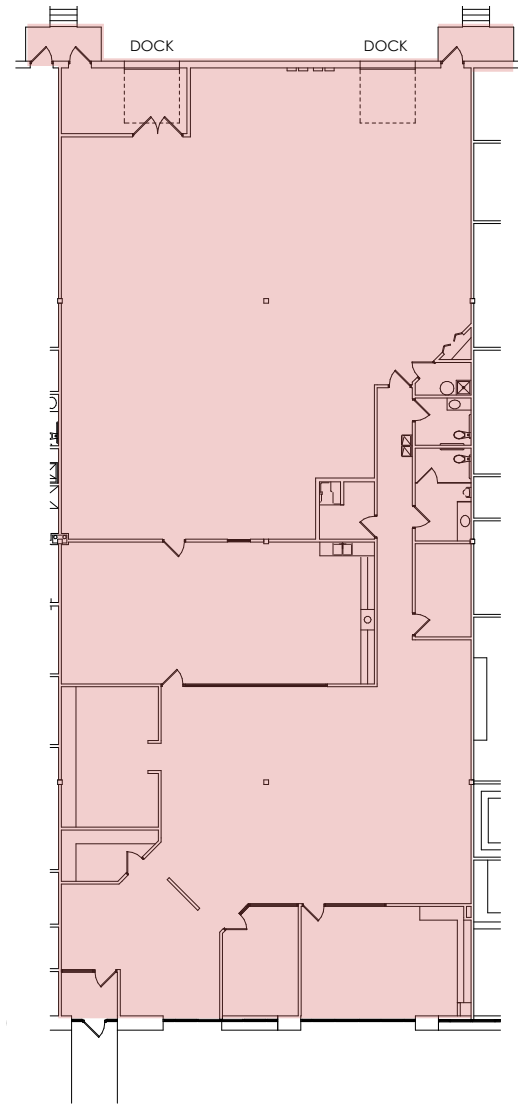


**5900 GOLDEN HILLS DRIVE,  
GOLDEN VALLEY MN**



**CBRE**

# PROPERTY DETAILS



## TOTAL BUILDING SF

**92,379 SF**

## AVAILABLE SF

**8,480 SF**

4,280 OFFICE SF

4,200 WAREHOUSE SF

## CLEAR HEIGHT

**17'**

## YEAR BUILT

**1996**

## PARKING

**3.89/1,000**

## ELECTRICAL

**Two  
200A  
Panels**

## LEASE RATES

**Negotiable**

## RE TAXES & CAM

**\$9.42**

RE TAXES: \$5.61

CAM: \$3.81

## LOADING

**Two 8'x10'  
dock-high  
doors**

## ACCESS

**EASY ACCESS TO  
INTERSTATE 394 AND  
MN HWY 100 VIA XENIA  
AVENUE S. 5 MILES TO  
MINNEAPOLIS CBD**



# LOCATION MAP





# GH GOLDEN HILLS BUSINESS PARK I

## Brian Wasserman

Senior Vice President  
+1 952 924 4681  
brian.wasserman@cbre.com

## Matt Oelschlager

Executive Vice President  
+1 952 924 4600  
matt.oelschlager@cbre.com

## Mike Bowen

Senior Vice President  
+1 952 924 4885  
mike.bowen@cbre.com



©2023 CBRE, Inc. All rights reserved. This information has been obtained from sources believed reliable, but has not been verified for accuracy or completeness. You should conduct a careful, independent investigation of the property and verify all information. Any reliance on this information is solely at your own risk. CBRE and the CBRE logo are service marks of CBRE, Inc. All other marks displayed on this document are the property of their respective owners, and the use of such logos does not imply any affiliation with or endorsement of CBRE. Photos herein are the property of their respective owners. Use of these images without the express written consent of the owner is prohibited.