



**NORTHWEST
BUSINESS
CAMPUS I**

2905 NORTHWEST BLVD, PLYMOUTH,



VACANCY DETAILS

| | |
|--|---|
| SUITE 100/110/115 | 16,935 SF Total |
| SUITE 110/115 | 11,249 SF Total |
| SUITE 100 | 5,686 SF (100% office) Available 11/1/22 |
| 2022 EST. RE TAX AND OPERATING EXPENSES | \$5.48 PSF |

PROPERTY DETAILS

| | |
|-------------------|---|
| TOTAL BUILDING SF | 84,765 SF |
| LAND AREA | 9.40 acres |
| CLEAR HEIGHT | 12' |
| YEAR BUILT | 1985 |
| PARKING | 344 (3.9/1,000) with potential to add more stalls |
| FREEWAY ACCESS | Access to Hwy 55 via Northwest Blvd |

TOM BENNETT
+1 952 924 4897
tom.bennett@cbre.com

TOM HAYHOE
+1 952 924 4804
tom.hayhoe@cbre.com

Capital Partners



2905 NORTHWEST BLVD, PLYMOUTH, MN

PROPERTY FEATURES

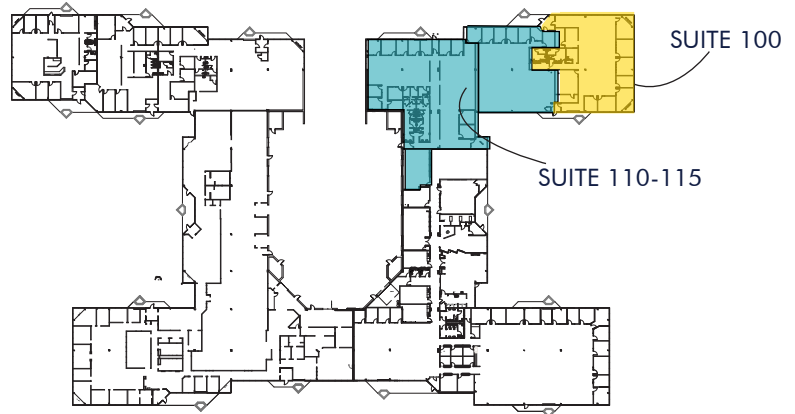
Part of a spacious 168-acre business campus

Class A office finishes

Space includes existing fitness center and locker-room/
showers!

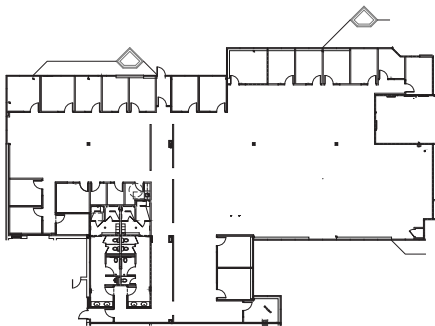
Plug-And-Play Opportunity

Located in close proximity to a multitude of retail,
medical, office, restaurant, and hotel accommodations



SUITE 110/115

11,249 SF



SUITE 100

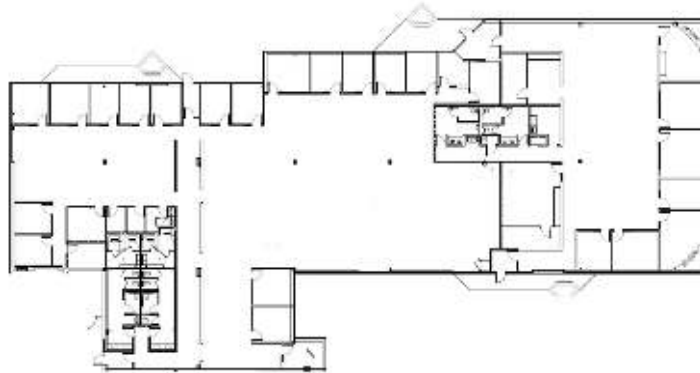
5,686 SF total (100%
office)

Available 11/1/2022



SUITE 100/110/115

16,614 SF



TOM BENNETT
+1 952 924 4897
tom.bennett@cbre.com

TOM HAYHOE
+1 952 924 4804
tom.hayhoe@cbre.com

