

FOR LEASE

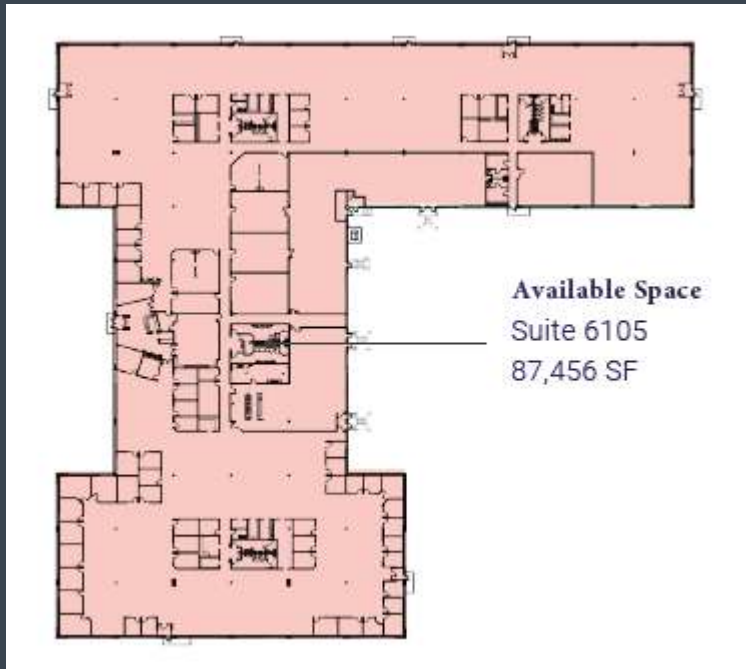


GOLDEN HILLS BUSINESS PARK III

6105 GOLDEN HILLS DRIVE, GOLDEN VALLEY MN

CBRE

PROPERTY DETAILS



- **TOTAL BUILDING SF:**
87,456 SF
- **AVAILABLE SF:**
87,456 SF
- **CLEAR HEIGHT:**
16'
- **YEAR BUILT:**
1999
- **PARKING:**
4/1,000
- **LEASE RATES:**
\$18.50 Net
- **REAL ESTATE TAXES:**
\$4.25
- **CAM:**
\$4.40
- **TOTAL:**
\$8.65



PROPERTY FEATURES

- Prominent Signage visible to I-394
- Close proximity to Hotels, Retail and Restaurants, minutes away from The West End
- Located at the intersection of I-394/Hwy 100/Xenia Blvd
- 6 minutes from Downtown Minneapolis
- Onsite Food Service
- Fitness Center with Lockers & Showers





CONTACT

BRIAN WASSERMAN

Senior Vice President

+1 952 924 4681

brian.wasserman@cbre.com

CBRE

© 2022 CBRE, Inc. All rights reserved. This information has been obtained from sources believed reliable, but has not been verified for accuracy or completeness. You should conduct a careful, independent investigation of the property and verify all information. Any reliance on this information is solely at your own risk. CBRE and the CBRE logo are service marks of CBRE, Inc. All other marks displayed on this document are the property of their respective owners, and the use of such logos does not imply any affiliation with or endorsement of CBRE. Photos herein are the property of their respective owners. Use of these images without the express written consent of the owner is prohibited.